

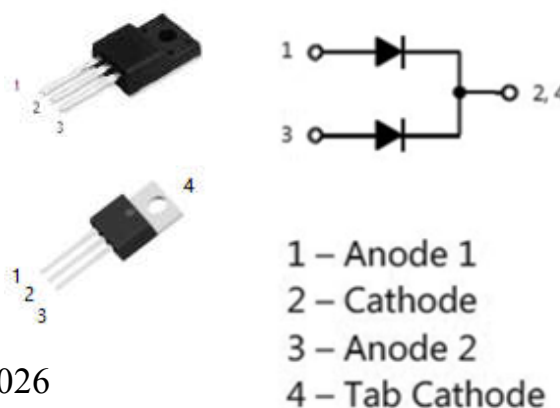
MBRF10100CT/MBR10100CT

Dual High Voltage Schottky Rectifier

General Description and Features

- Low forward voltage drop
- Low power loss,high efficiency
- High surge capability
- 10A total (5A per diode leg)
- 150°C operating junction temperature
- RoHS compliant
- Matte Tin(Sn) lead finish
- Pb-free package is available
- Terminal leads surface is corrosion resistant and can withstand to 260°C
- Wave soldering or per MIL-STD-750 method 2026

SCHOTTKY BARRIER RECTIFIERS CURRENT 10A VOLTAGE100V



Absolute Maximum Rating (Ta=25°C unless otherwise specified)

Symbol	Parameter	Value	Unit
V_{RRM}	Maximum Repetitive Reverse Voltage	100	V
V_R	Maximum DC Reverse Voltage		
$I_{F(AV)}$	Average Rectified Forward Current, TC=115°C	5 (Per Leg) 10 (Per Device)	A
I_{FRM}	Peak Repetitive Forward Current per Leg (Square Wave, 20 kHz, TC = 150°C)	10	A
I_{FSM}	Peak Forward Surge Current, 8.3ms, Half Sine wave	200	A
T_j	Operating Junction Temperature	150	°C
T_{STG}	Storage Temperature Range	-40 to +150	°C

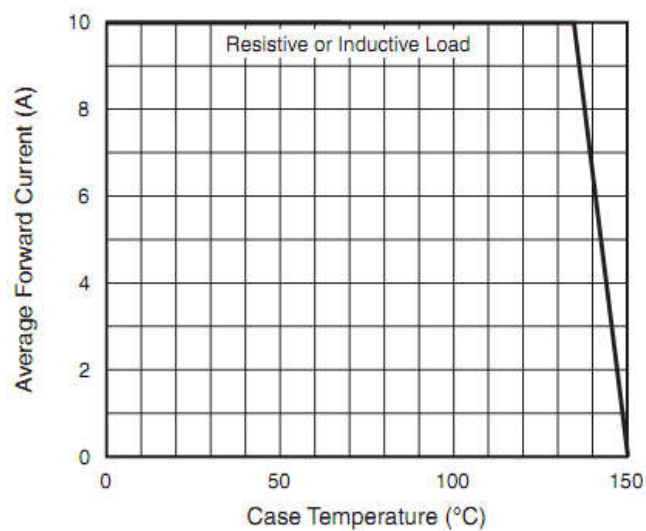
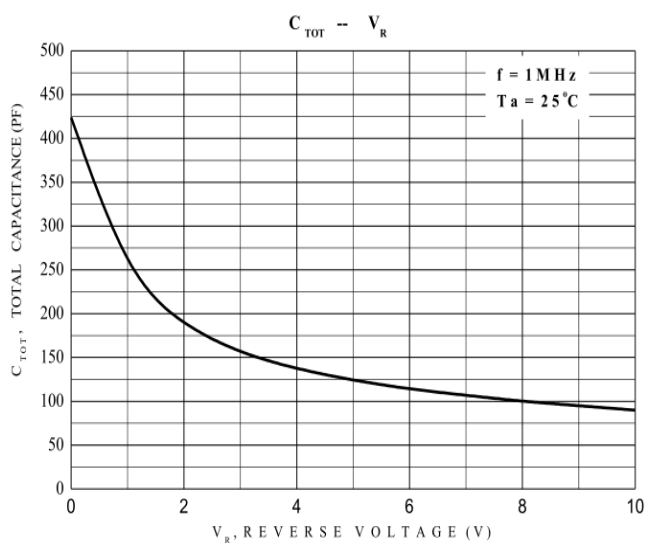
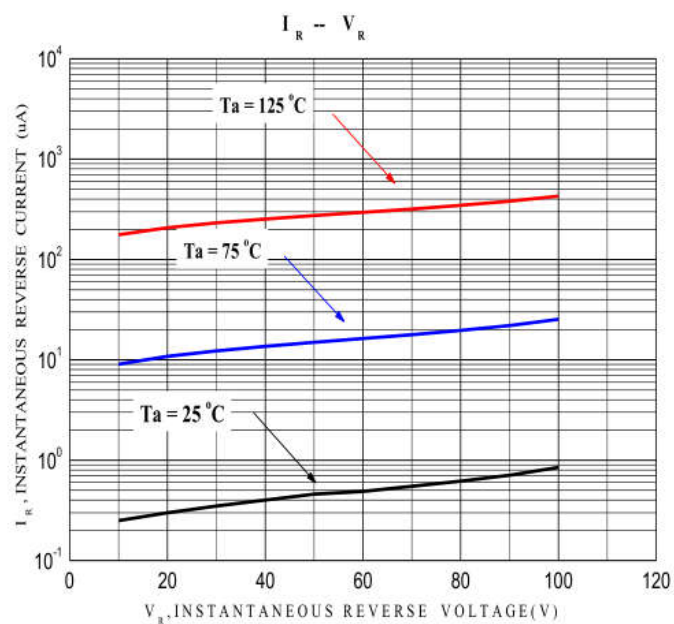
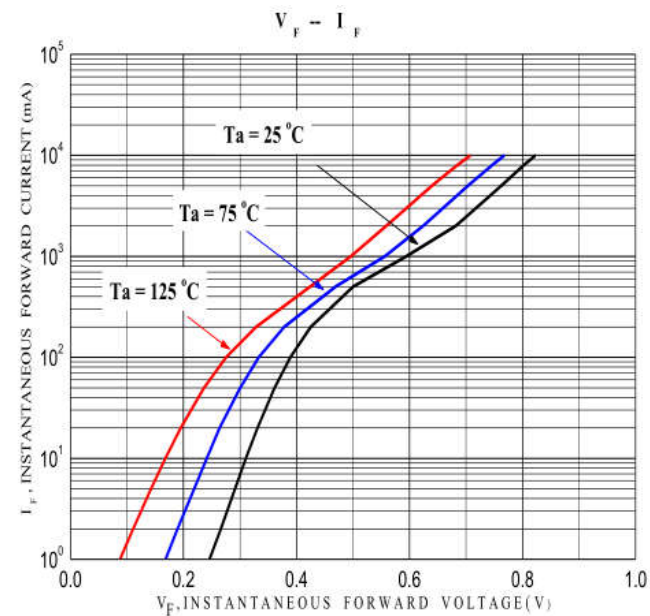
Thermal Characteristics (Ta = 25°C unless otherwise specified)

Symbol	Parameter	Maximum	Unit
$R_{\theta JC}$	Thermal Resistance, Junction to Case per Leg	5	°C/W

Electrical Characteristics (Per Diode Leg)

Symbol	Parameter	Test Condition	Minimum	Typical	Maximum	Unit
I_R	Reverse Current	$V_R = 100V, T_c = 25^\circ C$			5	uA
V_F	Forward Voltage	$I_F = 5A, T_c = 25^\circ C$		0.77	0.85	V

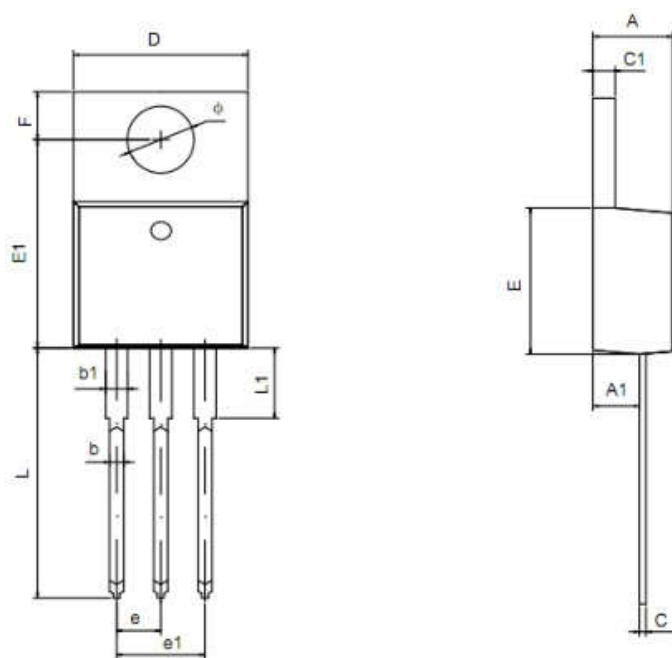
Characteristics Curves





<http://www.goodark.asia>

TO-220 POD



Symbol	Dimensions In Millimeters		Dimensions In Inches	
	Min	Max	Min	Max
A	4.420	4.720	1.174	0.186
A1	2.520	2.820	0.099	0.111
b	0.710	0.910	0.028	0.036
b1	1.170	1.370	0.046	0.054
c	0.360	0.460	0.014	0.018
c1	1.170	1.370	0.046	0.054
D	9.950	10.250	0.392	0.404
E	8.990	9.290	0.354	0.366
E1	12.550	12.850	0.494	0.506
e	2.540TYP		0.100TYP	
e1	4.980	5.180	0.196	0.204
F	2.590	2.890	0.102	0.114
L	13.080	13.480	0.515	0.531
L1	2.470	2.870	0.097	0.113
φ	3.790	3.890	0.149	0.153