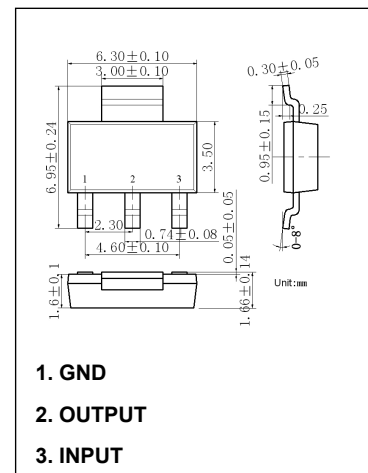


## 1A Low Dropout Linear Regulator

### Features

- Low Dropout Voltage: 5.0V at 1A Output Current
- Trimmed Current Limit
- On-Chip Thermal Shutdown
- Operation junction Temperature: 0°C to 125°C



### Absolute Maximum Ratings

Parameter	Value	Unit
V <sub>IN</sub>	20	V
Maximum Junction Temperature	150	°C
Storage Temperature Range	-65 to 150	°C
Lead Temperature (Soldering, 10sec.)	300	°C
ESD (Machine Model)	600	V

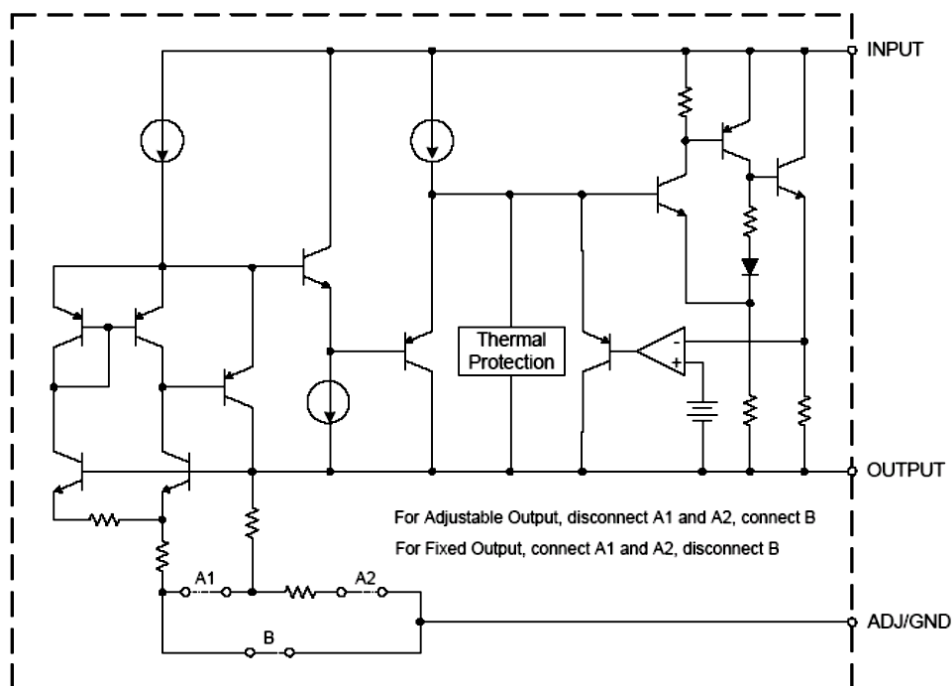
### Recommended Operating Conditions

Parameter	Min	Max	Unit
V <sub>IN</sub>		15	V
Operating Junction Temperature Range	0	125	°C

### Electrical Characteristics (T<sub>a</sub>=25°C unless otherwise specified)

Symbol	Parameter	Conditions	Min	Max	Unit
Vo1	Output Voltage	V <sub>in</sub> = 7.0V, I <sub>out</sub> = 10mA	4.950	5.050	V
Vo2		V <sub>in</sub> = 11.5V, I <sub>out</sub> = 10mA	4.900	5.100	V
Vo3-A		V <sub>in</sub> = 11.5V, I <sub>out</sub> = 1.0A	4.900	5.100	V
Vo3-B		V <sub>in</sub> = 11.5V, I <sub>out</sub> = 1.0A	4.900	5.100	V
Vo4		V <sub>in</sub> = 6.5V, I <sub>out</sub> = 10mA	4.900	5.100	V
Vo5		V <sub>in</sub> = 12V, I <sub>out</sub> = 10mA	4.900	5.100	V
Vo6-A		V <sub>in</sub> = 12V, I <sub>out</sub> = 250mA	4.900	5.100	V
Vo6-B		V <sub>in</sub> = 12V, I <sub>out</sub> = 250mA	4.900	5.100	V
Vo7		V <sub>in</sub> = 7.0V, I <sub>out</sub> = 10mA	4.900	5.100	V
Vo8		V <sub>in</sub> = 7.0V, I <sub>out</sub> = 1.0A	4.900	5.100	V
VDrop	Dropout Voltage	V <sub>in</sub> = 6.2V, I <sub>out</sub> = 1.0A		1.25	V
RegLine	Line Regulation	LNR =  Vo5 – Vo4		6	mV
RegLoad	Load Regulation	LDR =  Vo8 – Vo7		10	mV
Icc	Icc	V <sub>in</sub> = 4.8V		10	mA

## Functional Block Diagram



## Dimensions

